

NEUHEITEN
HiPro · DoPro

Grabenfräsen

*Werkzeuge für
echte Helden!*

BETEK
Trenching

MADE IN GERMANY

BETEK

Weiterkommen!

Weltweit im Einsatz: BETEK Hartmetall-Werkzeuge



1 - Straßenfräsen



2 - Surface Mining



3 - Stabilisieren



4 - Recycling



5 - Spezialtiefbau



6 - Brechen und Mischen



7 - Horizontales Bohren HDD



8 - Bergbau



9 - Grabenfräsen



10 - Tunnelbau



11 - Baggeranbaufräsen



12 - Forstmulchen



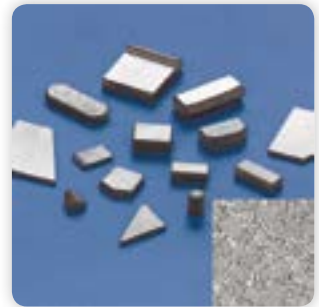
13 - Agrartechnik



14 - Gleisbau



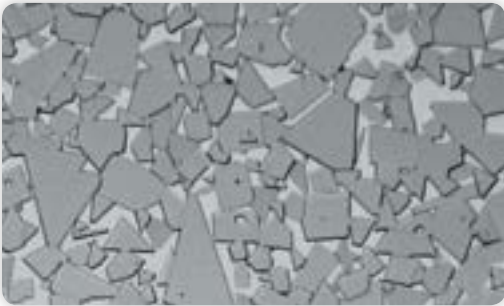
15 - TungStuds



16 - Verschleißschutz

Setzen Sie innovative Werkzeugsysteme von BETEK ein – und Sie werden mit überdurchschnittlichen Tagesleistungen weiterkommen! Hartmetallqualität und Geometrie der BETEK-Werkzeuge sind immer auf die Bearbeitungsaufgabe abgestimmt. Das sichert lange Standzeiten bei weniger Werkzeugwechsel.

Weiterkommen durch verschleißfeste Hartmetallqualität



Querschnitt durch Hartmetall der Qualität B20G, wie sie zum Beispiel für das Grabenfräsen eingesetzt wird

Hartmetall und Stahl – fest verbunden für härteste Belastungen

BETEK-Werkzeuge entstehen aus Hartmetall und Stahl: Hartmetall für die verschleißfeste Meißelspitze, Stahl für Meißelkopf und Werkzeugschaft. Um die beiden Materialien dauerhaft zu verbinden, wurden bei BETEK eigene Verfahren und spezielle Lötanlagen entwickelt. Die Verlotung der beiden Materialien erfolgt mit Überwachung und Dokumentation der Fertigungsparameter. Zusätzlich wird die Lötung auf Scherfestigkeit geprüft.

Dieser Aufwand zahlt sich im harten Einsatz aus. Die Werkzeuge können dabei sehr heiß werden. Da Hartmetall und Stahl unterschiedliche Ausdehnungseigenschaften bei Wärme haben, treten extreme Zugspannungen auf. Und hier kommt das Speziallot von BETEK ins Spiel, das Hartmetall mit Stahl verbindet. Es nimmt die Zugspannungen auf und hält diesen Stand – damit Helden der Baustelle keine Zeit durch Werkzeugbruch verlieren.



Überwachte Fertigung auf der vollautomatischen Lötanlage



Das Löten für eine dauerhafte Verbindung von Hartmetall und Stahl

So entstehen unsere High-Tech-Werkzeuge

Kundenservice



- Wirtschaftliche Kundenlösungen aufgrund flexibler Strukturen
- Individuelles, schnelles Eingehen auf Kundenanforderungen

Entwicklung & Konstruktion



- Zeitnahe Realisation von Mustern und Prototypen
- Konkurrenzfähige Preise durch enge Zusammenarbeit mit allen Produktionsbereichen

Hartmetallfertigung



- Verwendung von Rohstoffen hoher Reinheit für hohe Festigkeit
- Konstant hohe, porenfreie Hartmetallqualität durch eine exakte Prozessführung dank jahrelanger Erfahrung und Know-how

Produktionsbereich Löten



Eigens und bis zur Perfektion entwickelte Produktionsanlagen und Fertigungsprozesse von den Experten in der Verbindung von Hartmetall und Stahl

Automatisierung



Wettbewerbsfähigkeit auf dem Weltmarkt durch einen hohen Automatisierungsgrad und flexible Fertigungsanlagen

Qualitätssicherung



Permanente Qualitätsprüfungen der gesamten Fertigungskette bis zur Baustelle nach DIN ISO 9001:2000 und DIN EN ISO 14001

Training



Anwender-Schulungen im Hause BETEK oder direkt auf der Baustelle für langfristigen wirtschaftlichen Erfolg und Kundenzufriedenheit

Logistik



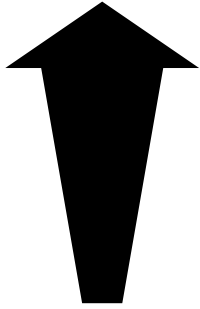
kurzfristige Reaktionsmöglichkeiten durch

- Einsatz modernster EDV und optimale Logistik-Vernetzung
- Lagerhaltung von Standardprodukten

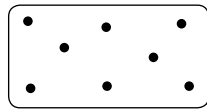
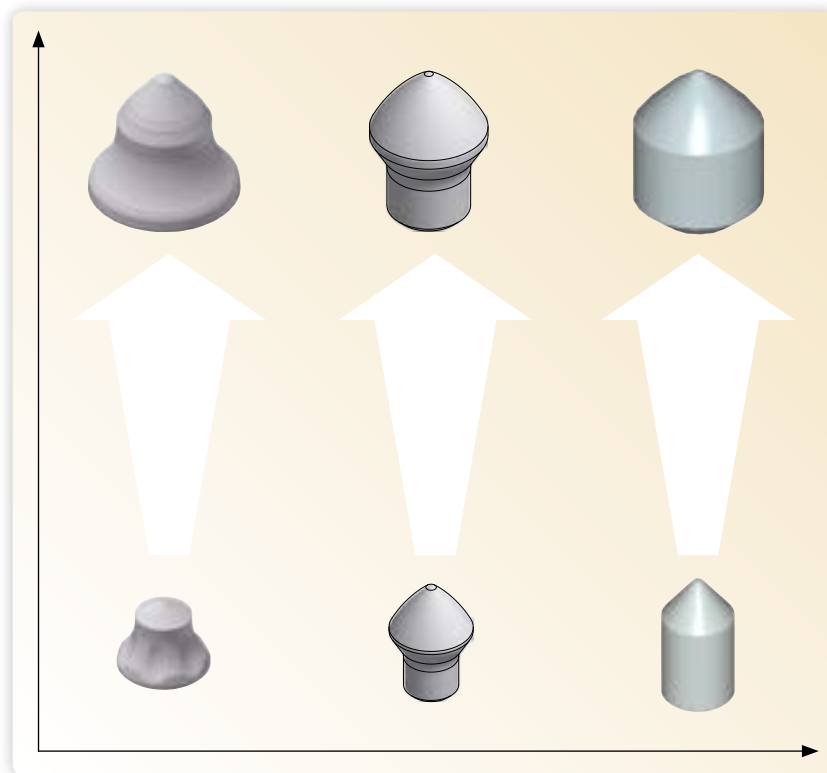
Das richtige Werkzeug für Ihre Anwendung



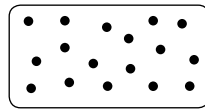
hohe
Maschinenleistung



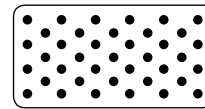
geringe
Maschinenleistung



weicher Boden



Mittelharter
Boden



Fels






Werkzeugprogramm

Seite

Anschweißzähne		8 – 9
Rundschaftmeißel	Schaftsystem Ø 11,3 mm / 0,44"	9
Rundschaftmeißel	Schaftsystem Ø 14 mm / 0,55"	10
Rundschaftmeißel	Schaftsystem Ø 18,7 mm / 0,74"	11
Rundschaftmeißel	Schaftsystem Ø 19,4 mm / 0,76"	12 – 14
Rundschaftmeißel	Schaftsystem Ø 22 mm / 0,87"	15 – 19
Rundschaftmeißel	Schaftsystem Ø 25 mm / 1"	20 – 24
Rundschaftmeißel	Schaftsystem Ø 38 / 30 mm - 1,5 / 1,18"	25 – 31
HiPro (High Protection)		32 – 33
DoPro (Double Protection)		34 – 35

Unter den Werkzeugabbildungen auf den nächsten Seiten finden Sie folgende Informationen:

→ **Artikel-Nr.**  ← Verpackungseinheit
 → **Bezeichnung**

Bemaßung: mm / Zoll

Schweißanleitung:

www.betek.de/de/produktprogramm/grabenfraesen-anwenderinfo.html

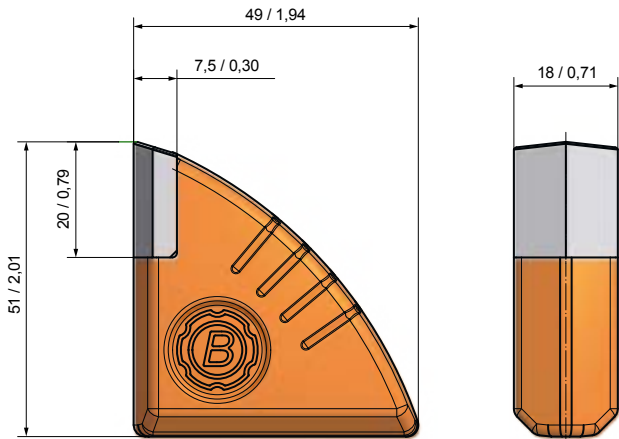


SERVICE:

trenchtek@betek.de

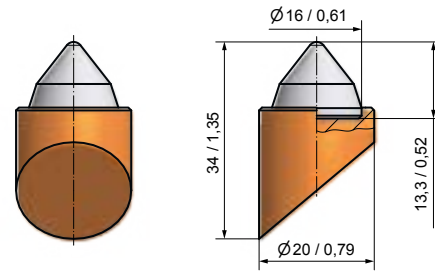
Tel.: +49 (0) 74 22 / 5 65-590

Anschweißzähne



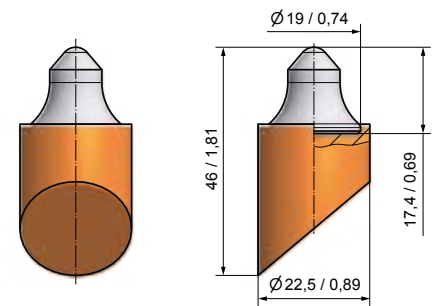
BFZ87
BFZ18/2

50



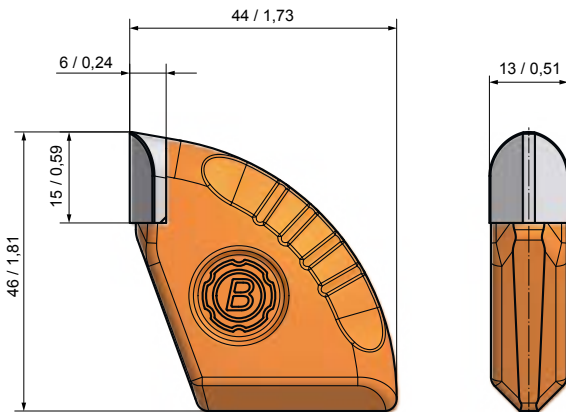
BFZ158
BFZ3

250



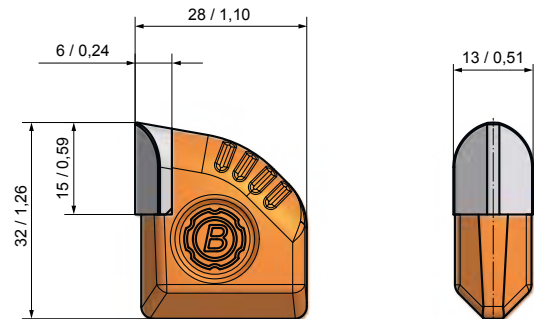
BFZ233
BFZ6

250



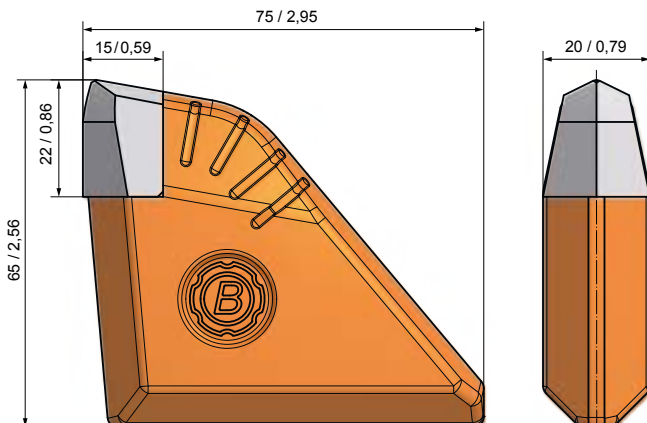
BFZ318
BFZ46x44x13

100



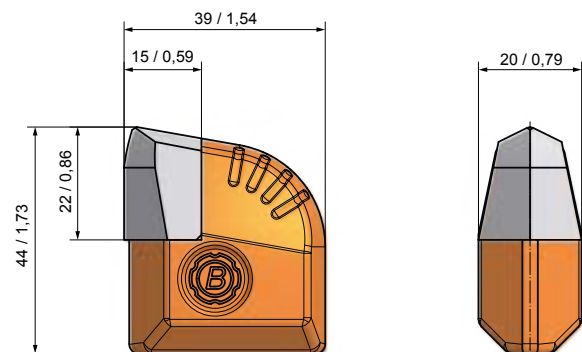
BFZ321
BFZ32x27x13

100



BFZ319
BFZ75x65x20

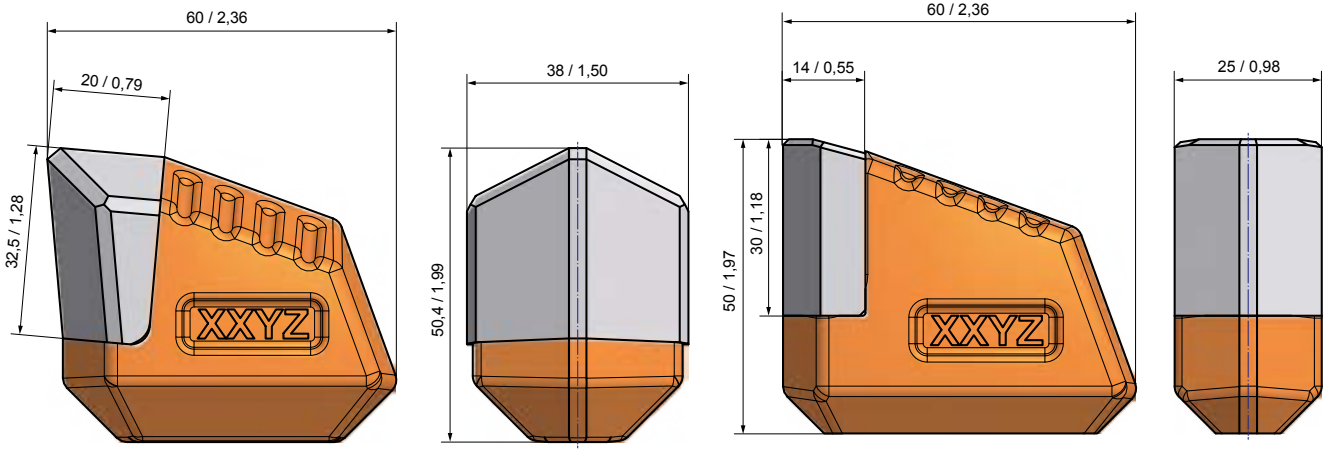
25



BFZ320
BFZ44x39x22

50

Anschweißzähne



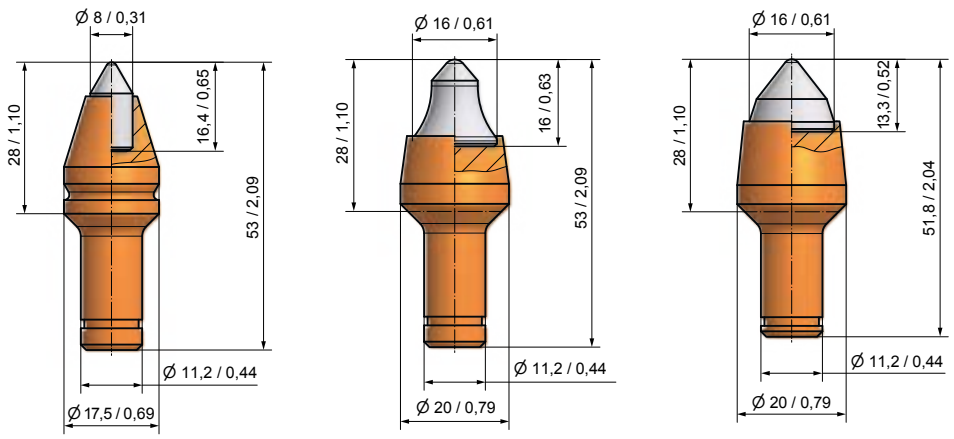
BFZ326
BFZ38/M



BBM75
BBM25x50



Rundschaftmeißel Schaftsystem Ø 11,3 mm/0,44"



Sicherungsring SR54

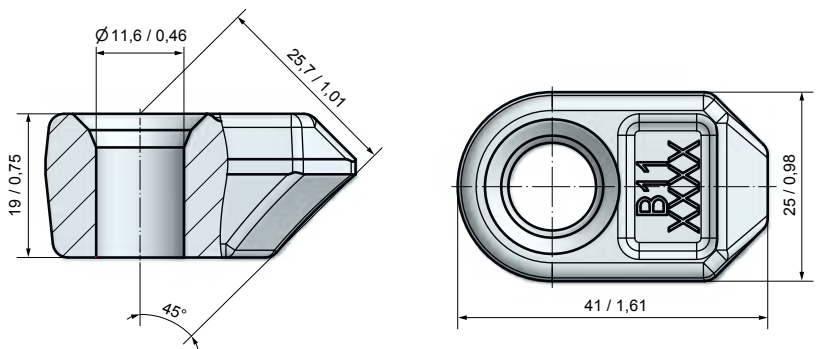
BM11
BM8-11.3



BM10
BM4-11.3



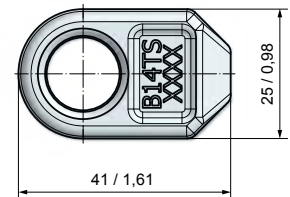
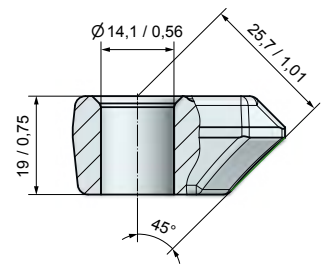
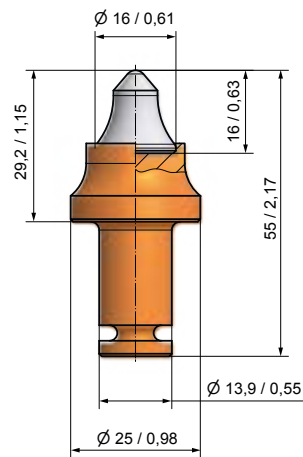
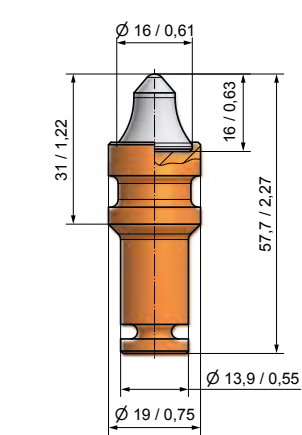
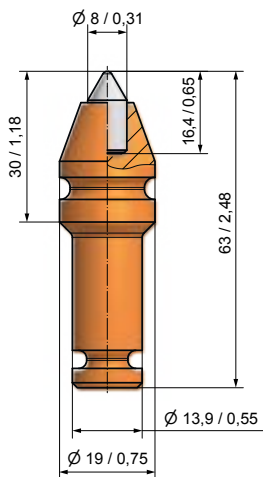
BM46
BM3-11.3



BHR03
B11



Schaftsystem Ø 14 mm/0,55"



Sicherungsring SR90

BM84
BM8-14

200

BM44
BM4-14

200

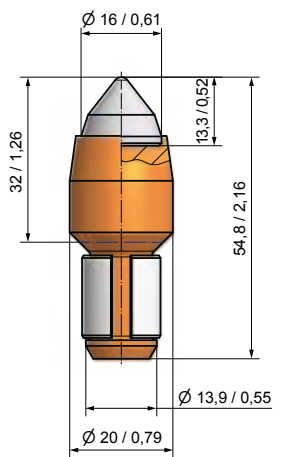
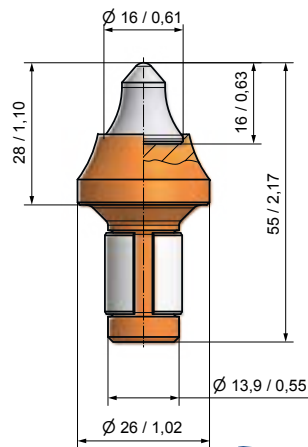
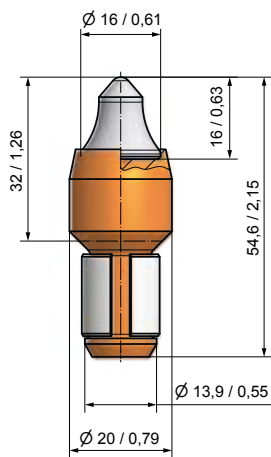
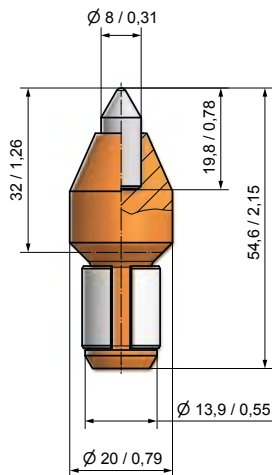
BM76
BM4-14/TS

200

BHR171
B14-TS

200

Schaftsystem Ø 14 mm/0,55"



BM56
BM8-14/2

200

BM55
BM4-14/2

200

BM82
BM4-14/3

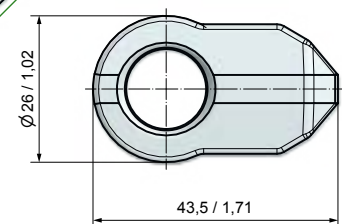
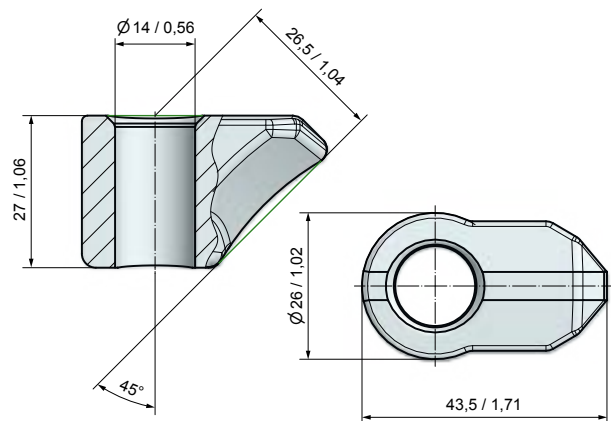
200

BM60
BM3-14/H

200



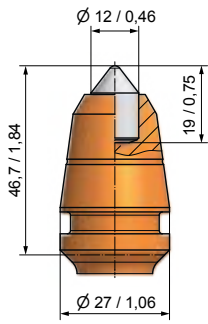
BZ44
Meißelaustreiber



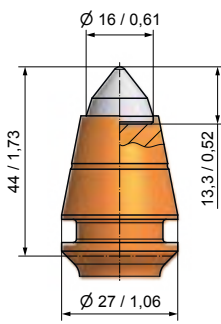
BHR109
B14

150

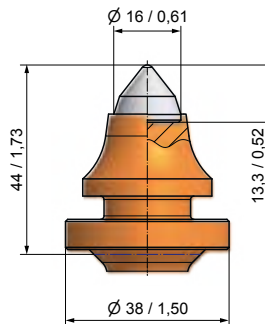
Schaftsystem Ø 18,7 mm/0,74"



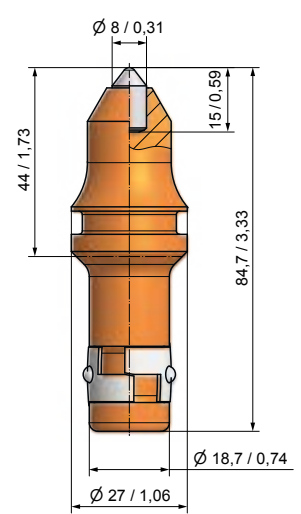
BTR02
B43HDK12



BTR03
B43/3



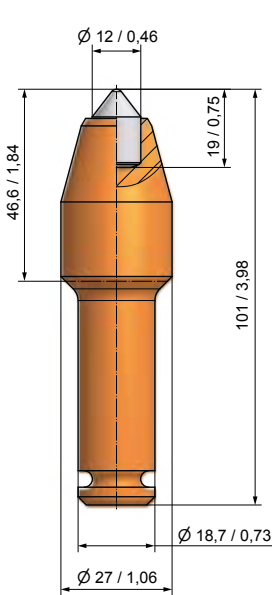
BTR09
BG19K-60.3844



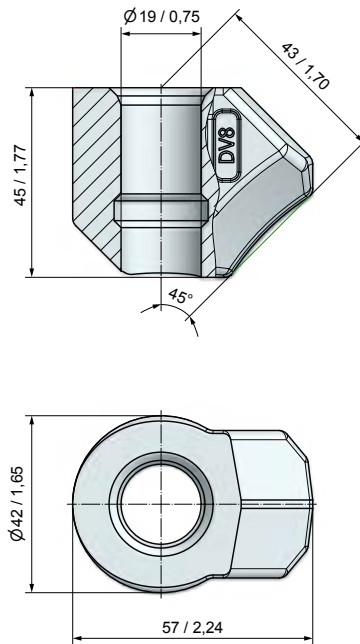
BTR01
B43K8



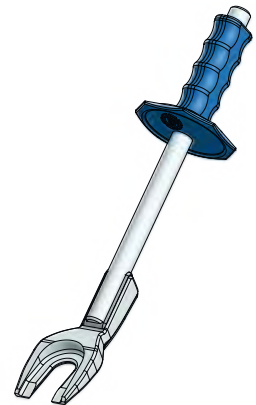
Schaftsystem Ø 18,7 mm/0,74"



BTR07
B43K12KS



BHR20
DV8



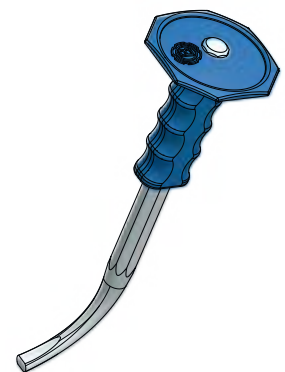
BZ42
Meißelauszieher



Sicherungsring SR80

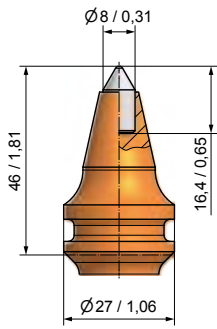


BZ38
Keilaustreiber



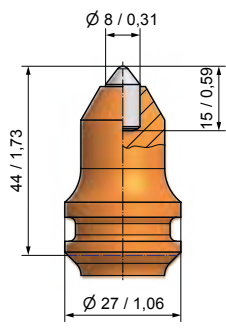
BZ43
Meißelaustreiber

Schaftsystem Ø 19,4 mm/0,76"



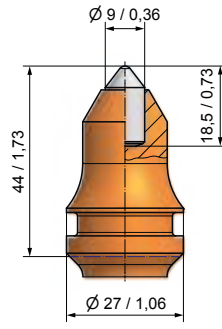
BSK19
B1K8-K

50



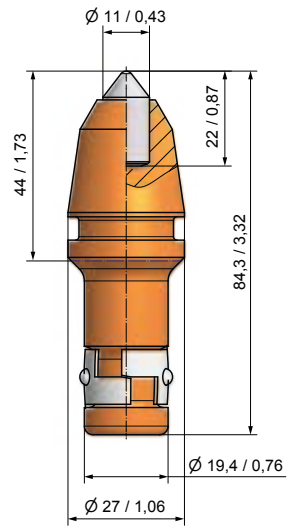
BSK22
B1K8-K/2

50



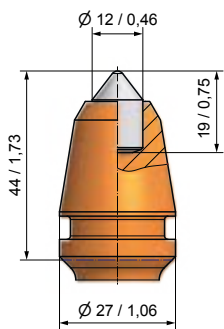
BSK15
B1K9-K

50



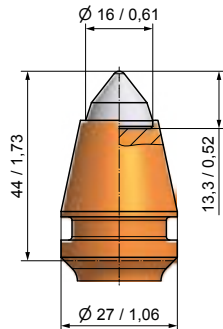
BSK16
B1HDK11-K

50



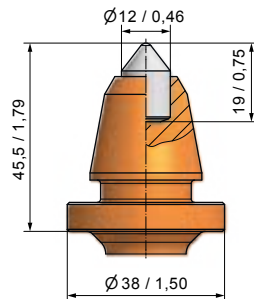
BSK17
B1HDK12-K

50



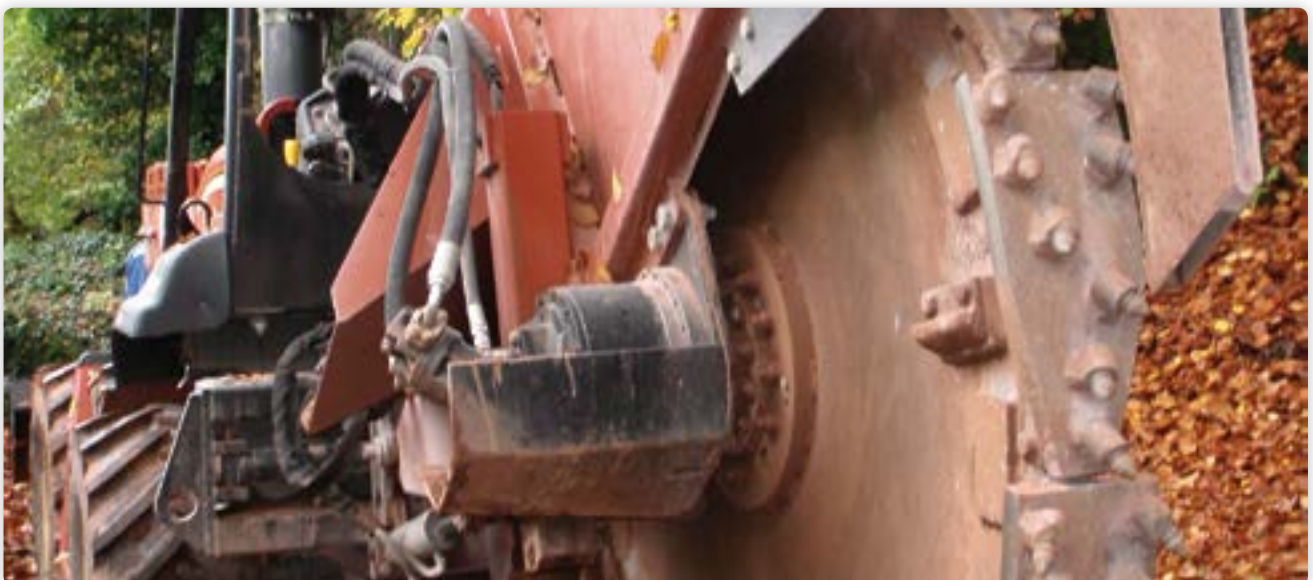
BSK23
B3-K/2

50

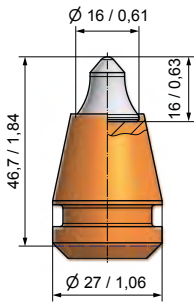


BSK21
B1-12/38-K

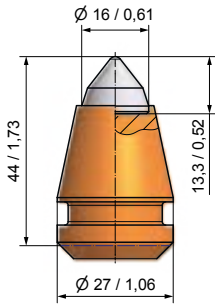
50



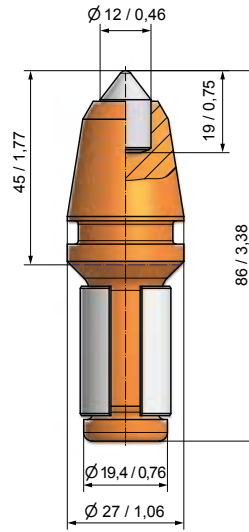
Schaftsystem Ø 19,4 mm/0,76"



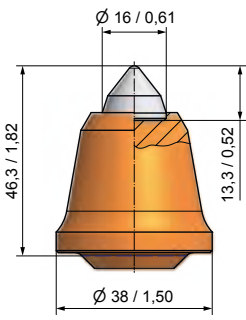
BSH204
B4



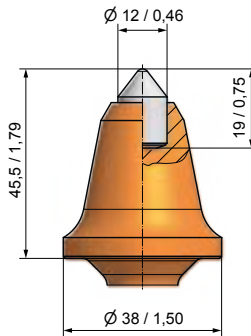
BSH09
B3



BSH05
B1HDK12



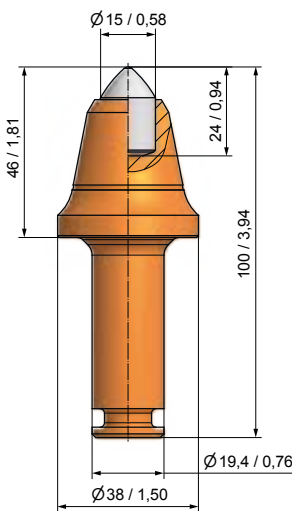
BSH211
B3/38



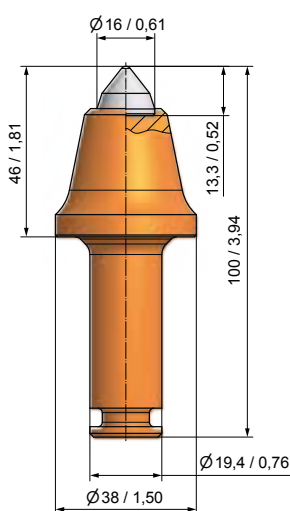
BSH210
B1-12/38



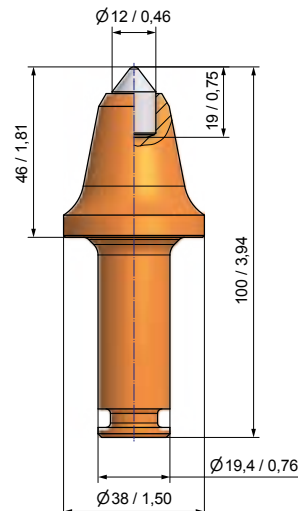
Schaftsystem Ø 19,4 mm/0,76"



BC68
BG20F-15.3846



BC26
B3KS

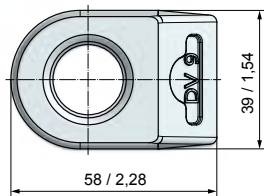
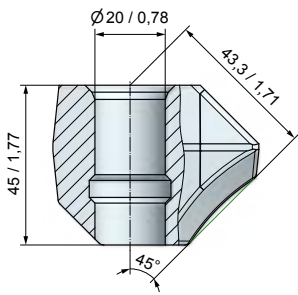


BC82
BG20F-12.3846



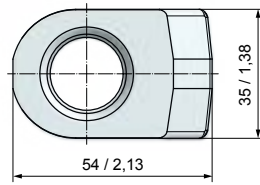
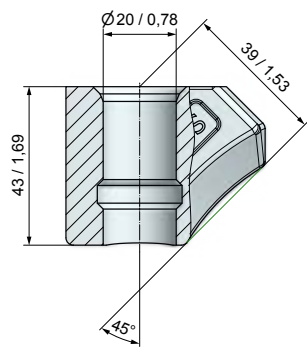
Sicherungsring SI36

Schaftsystem Ø 19,4 mm/0,76"



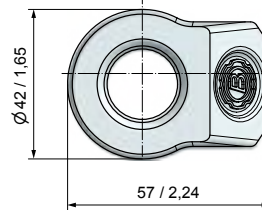
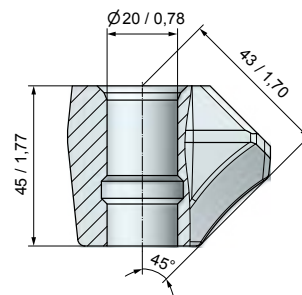
BHR07
DV9

40



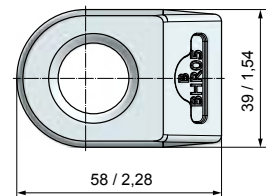
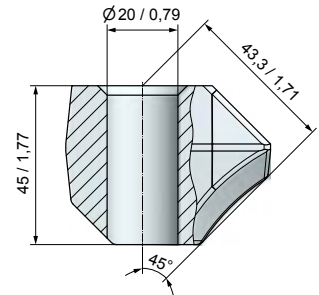
BHR164
DV9-S

50



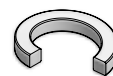
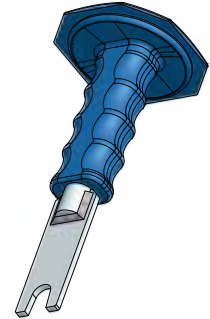
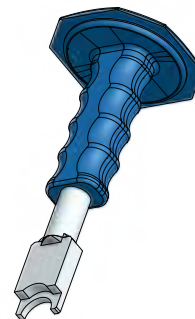
BHR12
DV12

40



BHR05
B10

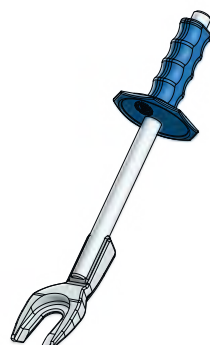
40



für Sicherungsring SI36

BZ33
Montagewerkzeug

BZ31
Demontagewerkzeug



BZ42
Meißelausezieher

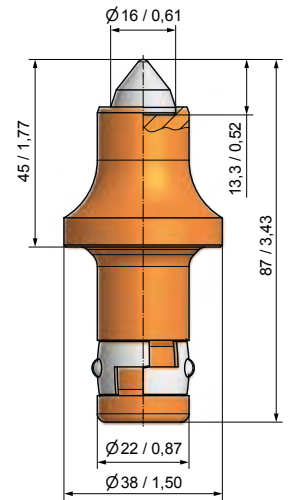


BZ43
Meißel austreiber



BZ38
Keil austreiber

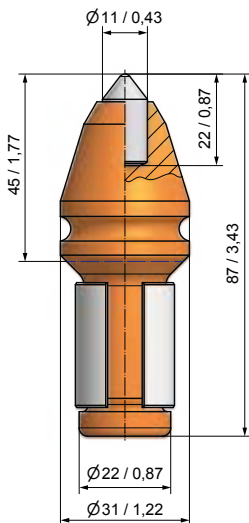
Schaftsystem Ø 22 mm / 0,87"



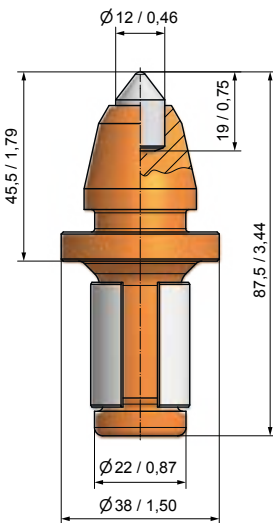
BC58
B3S/22-K



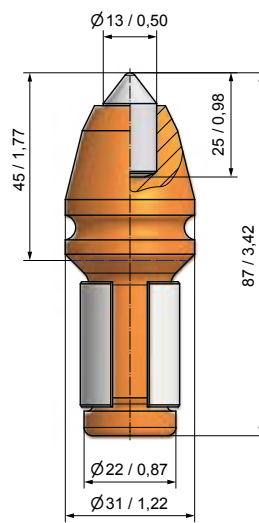
Schaftsystem Ø 22 mm / 0,87"



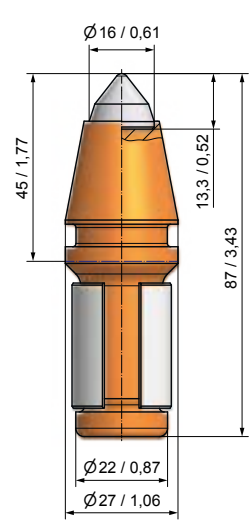
BC05
B1HDK11/22



BC60
B1-12/22



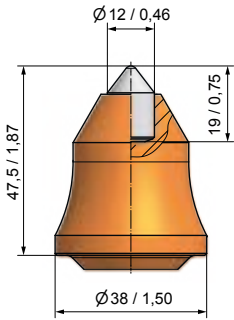
BC06
B1HDK13/22



BC49
B3/22

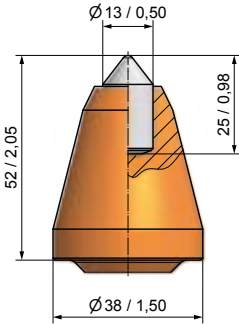


Schaftsystem Ø 22 mm/0,87"



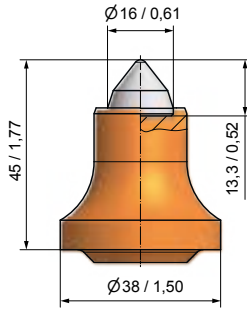
BC64

B1-12/22-B



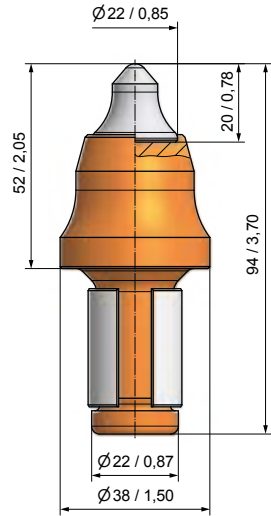
BC14

B1HDS38/13/22



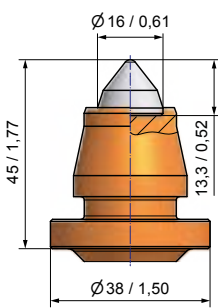
BC41

B3S/22



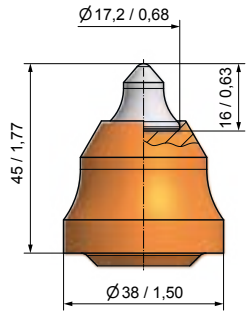
BC03

B8S/22



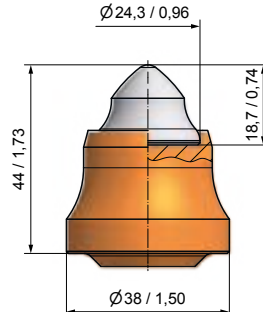
BC81

BG22H-60.3845



BC04

B5S/22

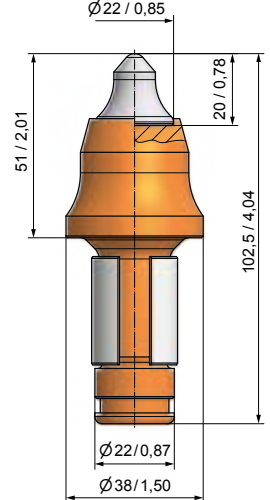
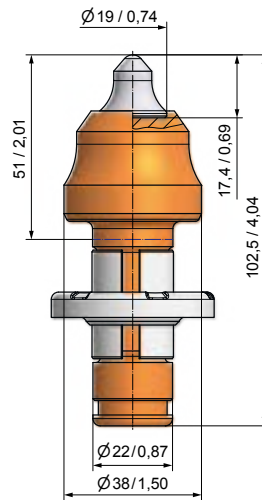
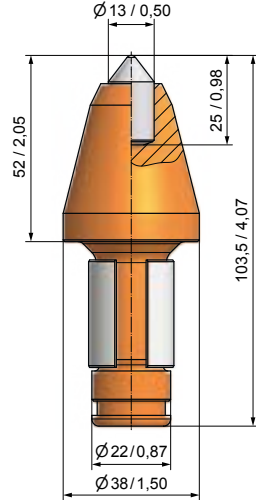
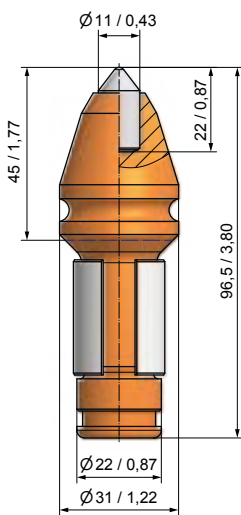


BC43

B9/22



Schaftsystem Ø 22 mm/0,87"



zusätzlicher Sicherungsring SR61

BC01
B1HDK11/22S



BC15
B1HD38/13/22/S



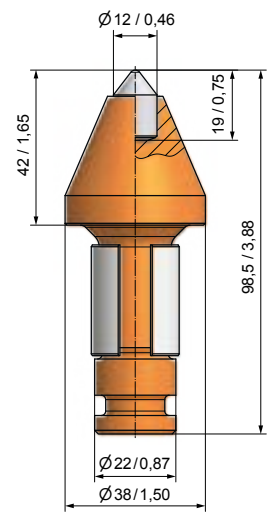
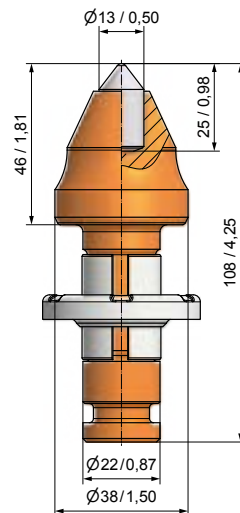
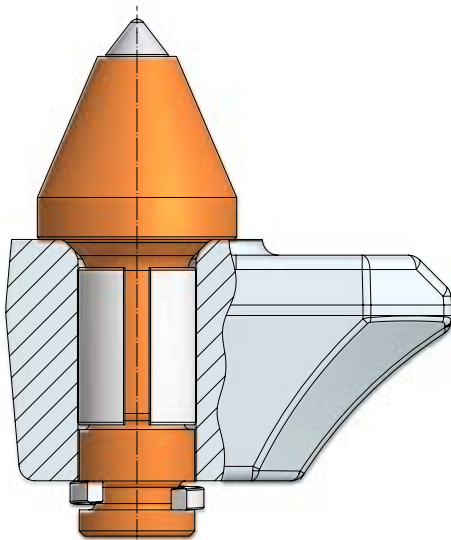
BC61
B6V/22/S



BC44
B8/22-S



Schaftsystem Ø 22 mm/0,87"



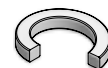
BC79
BG 22 HF-13.3851



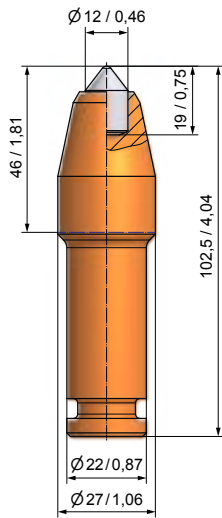
BC36
B1-12/22/SI26



zusätzlicher Sicherungsring SI26



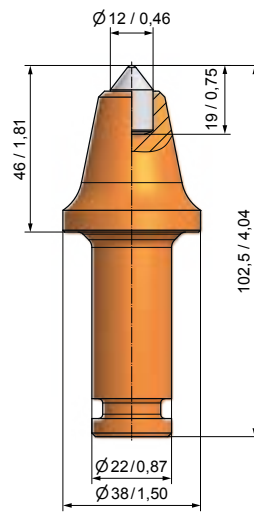
Schaftsystem Ø 22 mm/0,87"


BC39

B1-12KS22



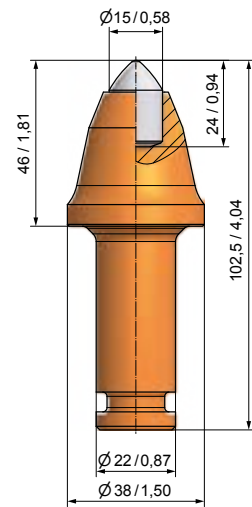
40


BC62

B1-12/38KS22



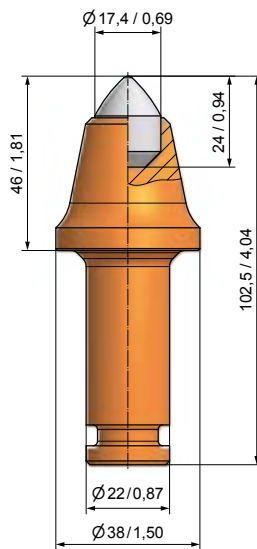
40


BC77

BG22F-15.3846



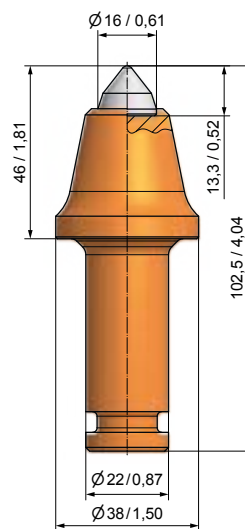
40


BC56

B1-17KS22



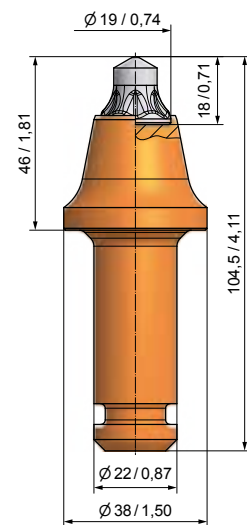
40


BC33

B3KS22



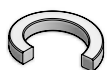
40


BC78

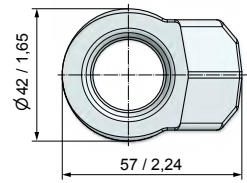
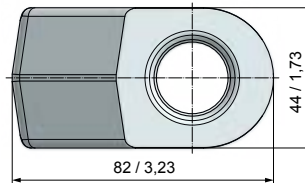
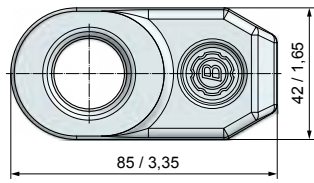
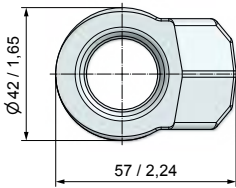
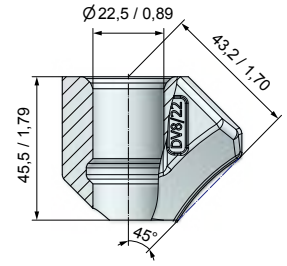
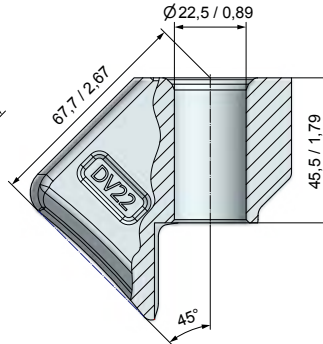
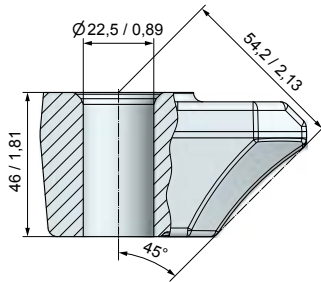
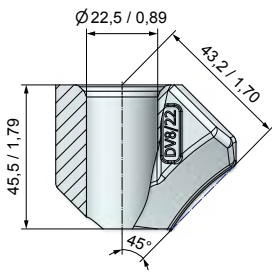
BG22F-65.3846



40


Sicherungsring SI26


Schaftsystem Ø 22 mm / 0,87"



BHR27
DV8/22



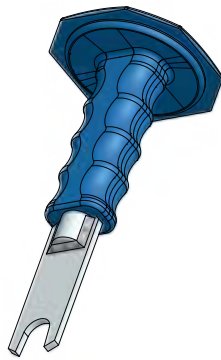
BHR120
B22S



BHR30
DV22



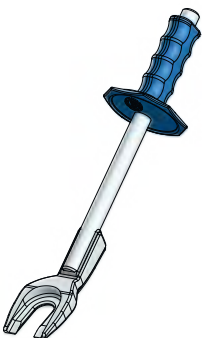
BHR176
DV8/22-K



für Sicherungsring SI26

BZ41
Montagewerkzeug

BZ32
Demontagewerkzeug

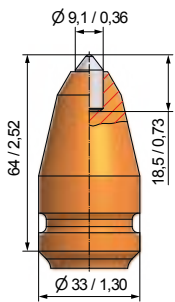


BZ42
Meißelausezieher

BZ43
Meißel austreiber

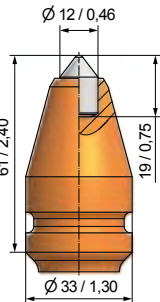
BZ38
Keil austreiber

Schaftsystem Ø 25 mm / 1"



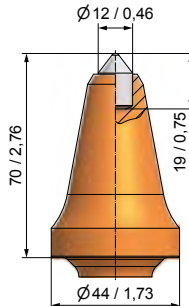
30

BTK01
B40K9



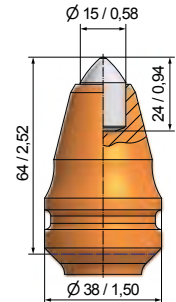
30

BTK03
B40HDK12



20

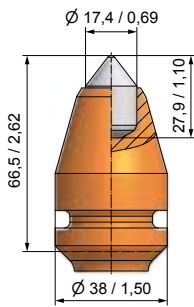
BTK141
BG25K-12.4470A



Vorzugsware

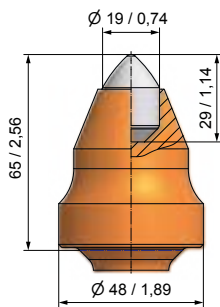
30

BTK10
B40HDS



25

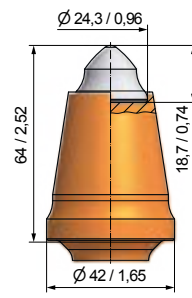
BTK70
B40K17,5



Vorzugsware

25

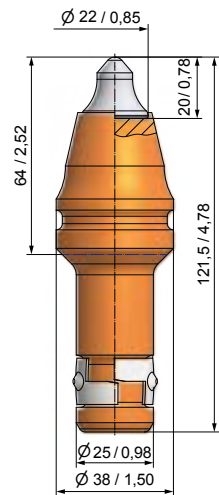
BTK54
B40HDS19



Vorzugsware

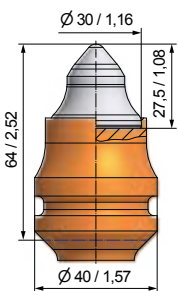
25

BTK87
B40/9



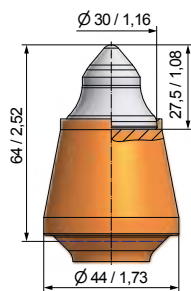
30

BTK20
BG25K-67.3864



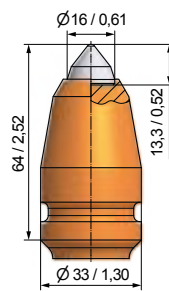
25

BTK23
B40HBL



25

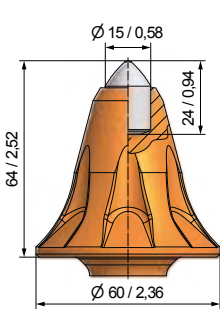
BTK26
B40-J1-HBL



30

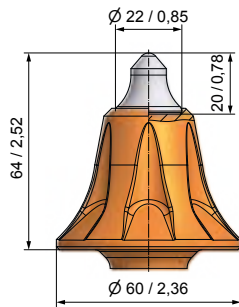
BTK16
B40/3

Schaftsystem Ø 25 mm / 1"



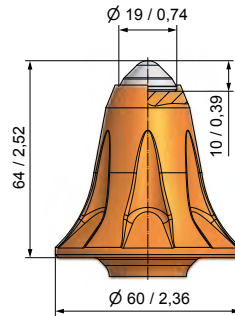
BTK81

B40HDS/60



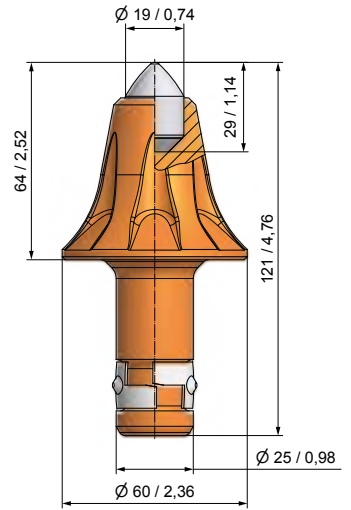
BTK80

B4022/60



BTK82

B40SG/60

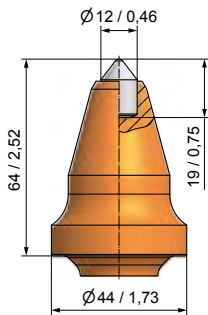


BTK89

BG25K-19.6064

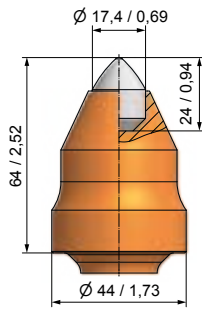


Schaftsystem Ø 25 mm / 1"



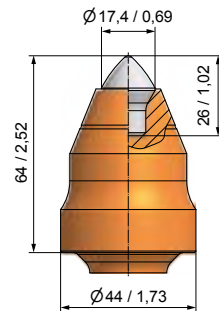
BTK142

BG25F-12.4464A



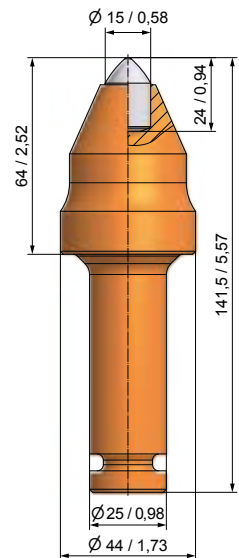
BTK11

BG25F-17.4464



BTK135

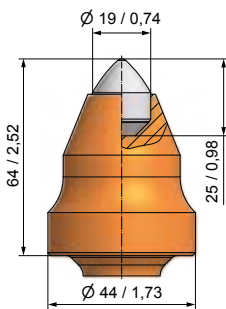
BG25F-70.4464



Vorzugsware

BTK29

BG25F-15.4464

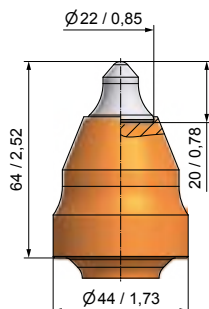


BTK14

BG25F-19.4464



Vorzugsware



BTK43

BG25F-67.4464



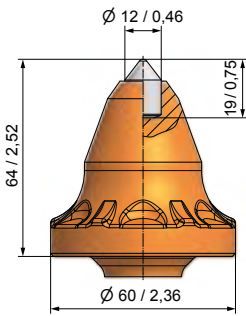
Sicherungsring SI79 / K

BTK14
BG25F-19.4464

BTK43
BG25F-67.4464

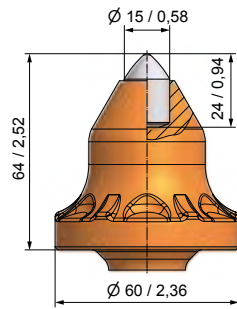
BTK29
BG25F-15.4464

Schaftsystem Ø 25 mm/1" Kopflänge 64 mm/2,5"



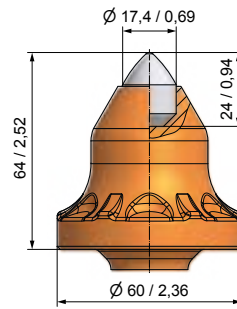
Vorzugsware

BTK114
BG25F-12.6064

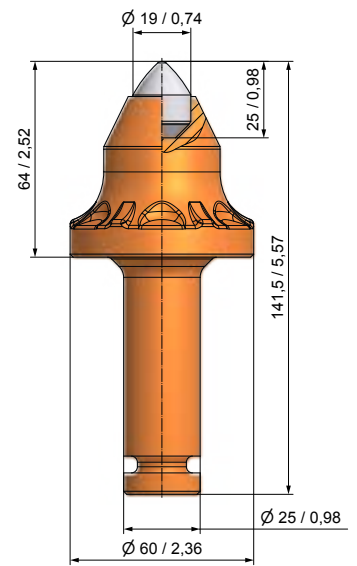


Vorzugsware

BTK120
BG25F-15.6064

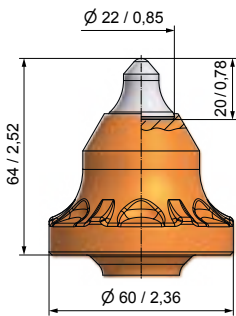


BTK121
BG25F-17.6064

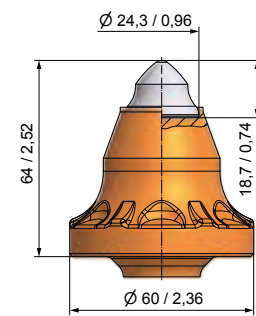


Vorzugsware

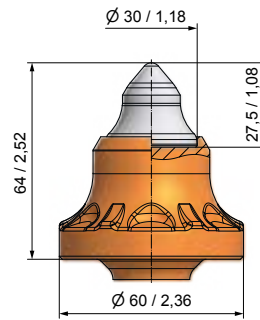
BTK122
BG25F-19.6064



BTK123
BG25F-67.6064



BTK124
BG25F-68.6064

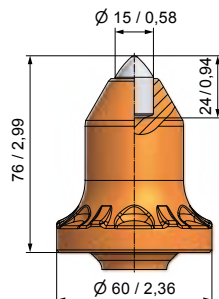


BTK125
BG25F-69.6064A

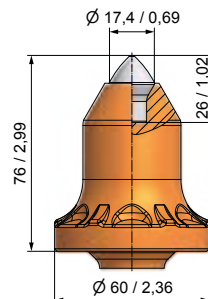


Sicherungsring SI79 / K

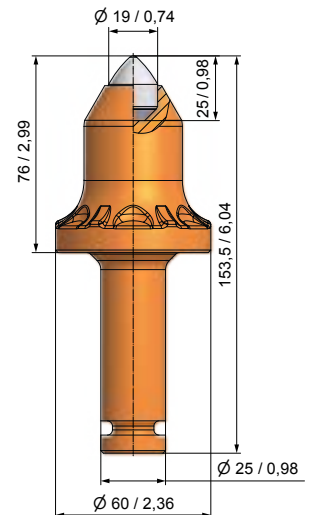
Schaftsystem Ø 25 mm/1" Kopflänge 76 mm/3,0"



BTK113
BG25F-15.6076



BTK126
BG25F-70.6076A

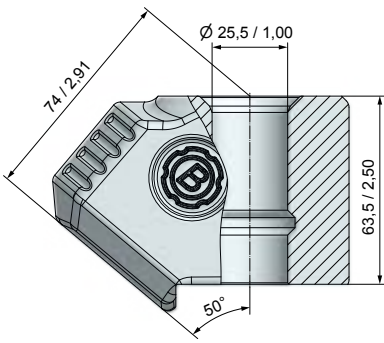


BTK127
BG25F-19.6076A

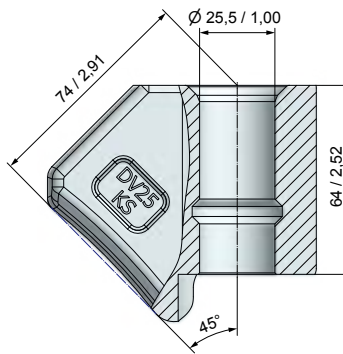


Sicherungsring SI79 / K

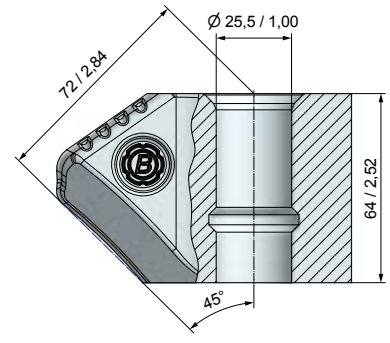
Schaftsystem Ø 25 mm / 1"



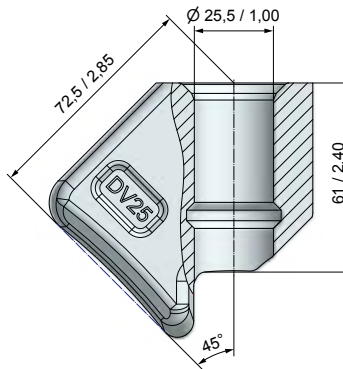
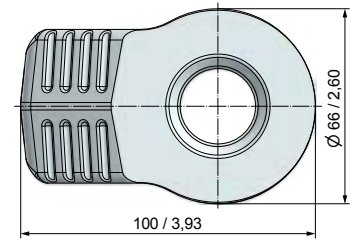
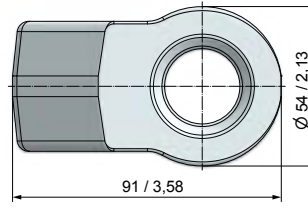
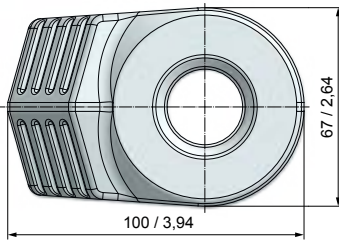
BHR186
B25.6750



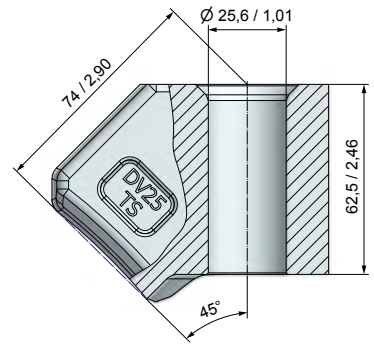
BHR121
DV25KS



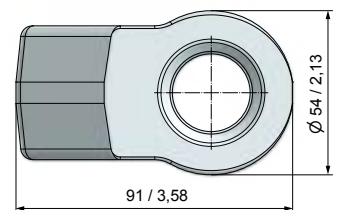
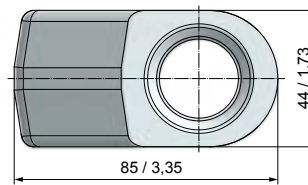
BHR34
DV40VS



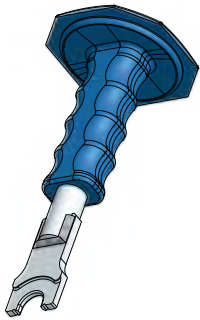
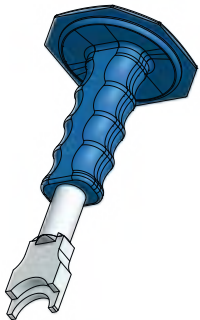
BHR31
DV25



BHR145
DV25TS



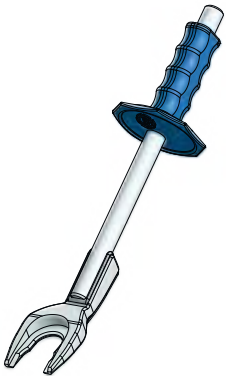
Schaftsystem Ø 25 mm / 1"



für Sicherungsring SI79 / K

BZ37
Montagewerkzeug

BZ36
Demontagewerkzeug



BZ22
Meißelausezieher



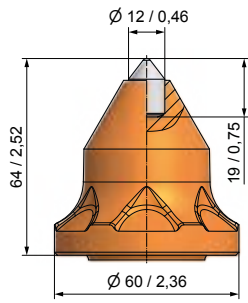
BZ43
Meißelaustreiber



BZ38
Keilaustreiber

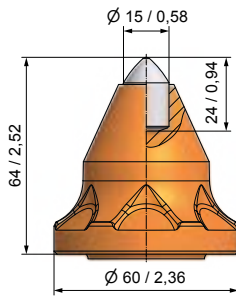


Schaftsystem Ø 38/30 mm - 1,5/1,18" Kopflänge 64 mm/2,5"



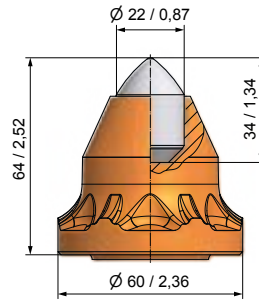
BKS165

BS38W-12.6064A



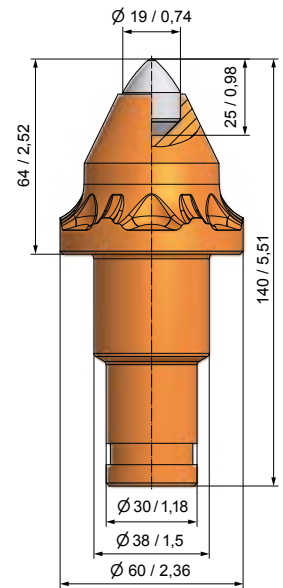
BKS144

BS38W-15.6064



BKS162

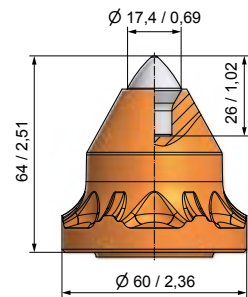
BS38W-22.6064



Vorzugsware

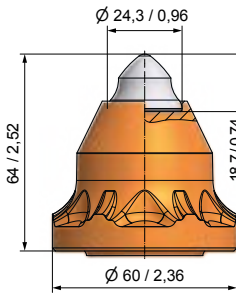
BKS151

BS38W-19.6064



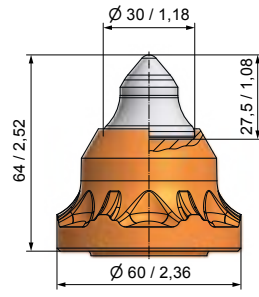
BKS163

BS38W-70.6064



BKS160

BS38W-68.6064

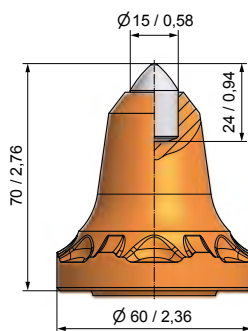


BKS161

BS38W-69.6064

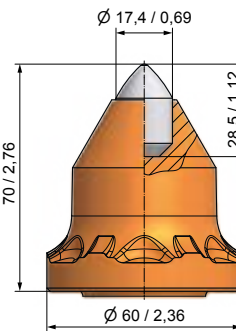


Schaftsystem Ø 38/30 mm - 1,5/1,18" Kopflänge 70 mm/2,75"



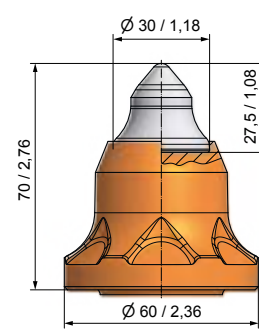
BKS168

BS38W-15.6070



BKS166

BS38W-17.6070

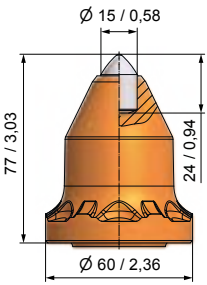


BKS167

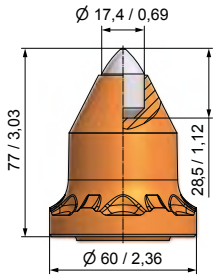
BS38W-69.6070A



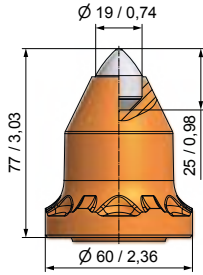
Schaftsystem Ø 38/30 mm - 1,5/1,18" Kopflänge 77 mm/3,0"



BKS169
BS38W-15.6077A



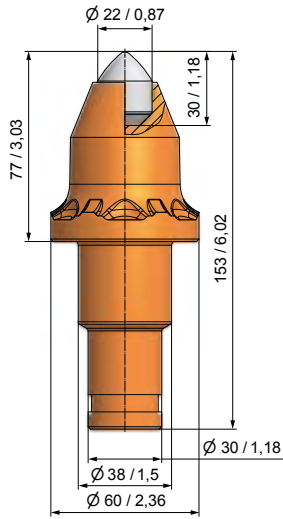
BKS171
BS38W-17.6077



Vorzugsware



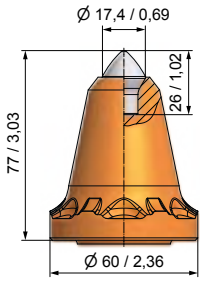
BKS172
BS38W-19.6077



BKS170
BS38W-22.6077



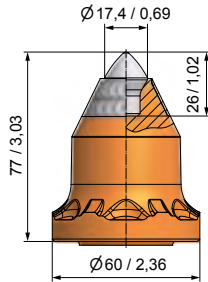
Schaftsystem Ø 38/30 mm - 1,5/1,18" Kopflänge 77 mm/3,0"



Vorzugsware

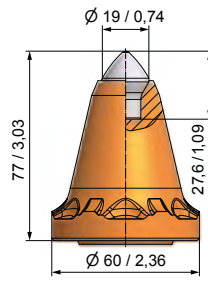
BKS174

BS38W-70.6077



BKS193

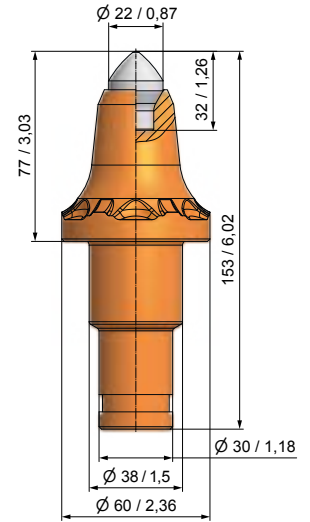
BS38W-70.6077P



Vorzugsware

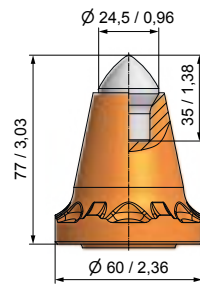
BKS175

BS38W-72.6077



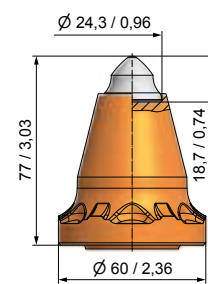
BKS158

BS38W-73.6077



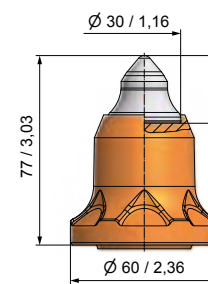
BKS176

BS38W-71.6077



BKS178

BS38W-68.6077

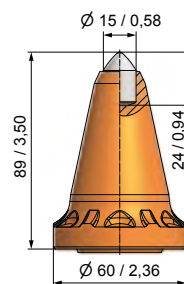


BKS177

BS38W-69.6077A

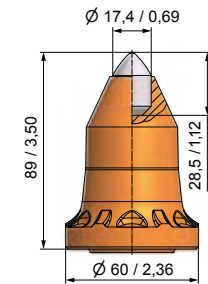


Schaftsystem Ø 38/30 mm - 1,5/1,18" Kopflänge 89 mm/3,5"



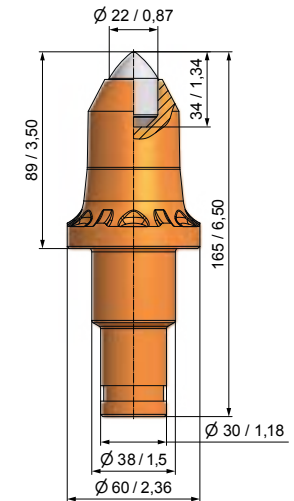
BKS179

BS38W-15.6089



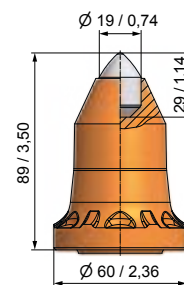
BKS180

BS38W-17.6089



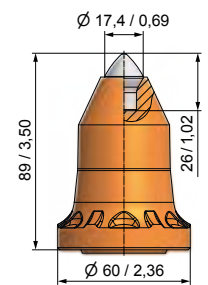
BKS183

BS38W-22.6089



BKS181

BS38W-19.6089

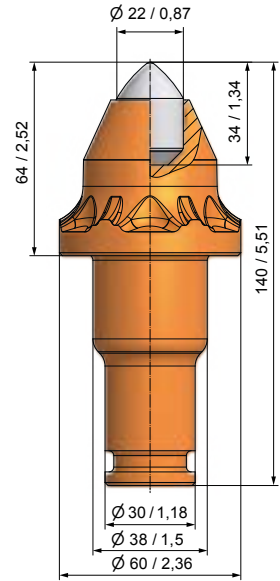
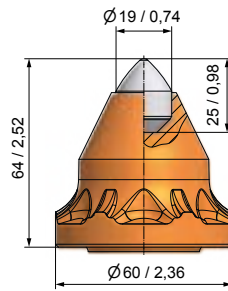
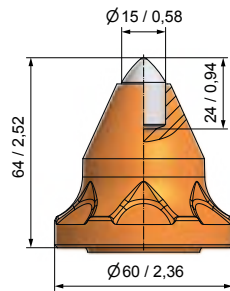
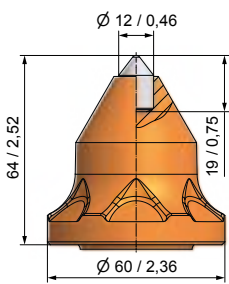


BKS182

BS38W-70.6089



Schaftsystem Ø 38/30 mm - 1,5/1,18" Kopflänge 64 mm/2,5"



BKF27



BS38F-12.6064

BKF24



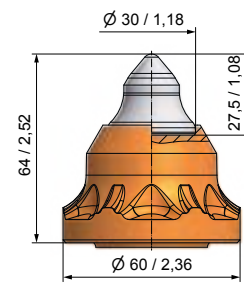
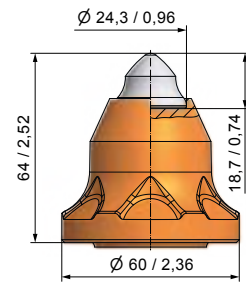
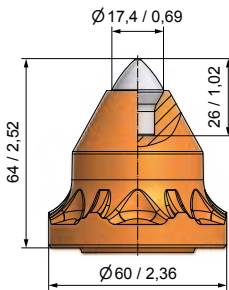
BS38F-15.6064

BKF22



BS38F-19.6064

Vorzugsware



BKF26



BS38F-22.6064

BKF25



BS38F-70.6064

BKF28

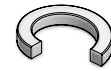


BS38F-68.6064

BKF29



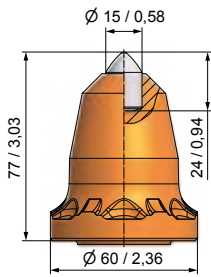
BS38F-69.6064



**Sicherungsring
SI35 / 22**



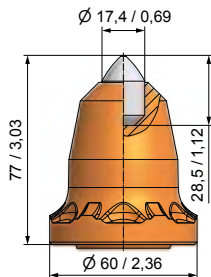
Schaftsystem Ø 38/30 mm - 1,5/1,18" Kopflänge 77 mm/3,0"



BK F32

BS38F-15.6077

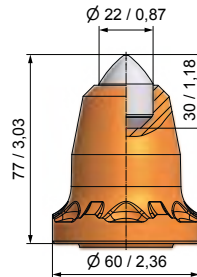
10



BK F33

BS38F-17.6077

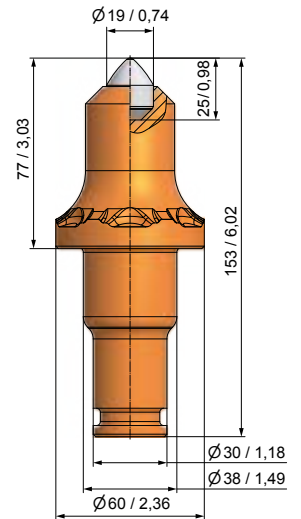
10



BK F31

BS38F-22.6077

10

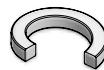


Vorzugsware

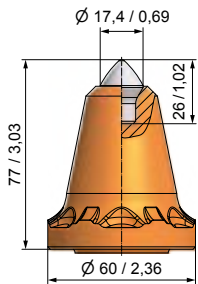
BK F30

BS38F-19.6077

10



**Sicherungsring
SI35 / 22**

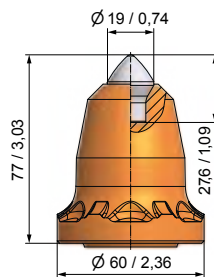


Vorzugsware

BK F40

BS38F-70.6077

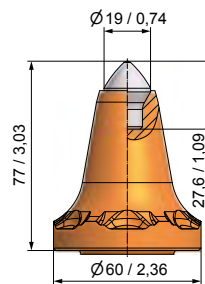
10



BK F39

BS38F-72.6077

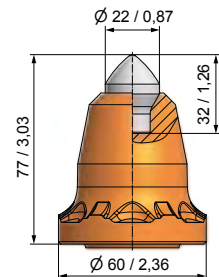
10



BK F39S

BS38F-72.6077A

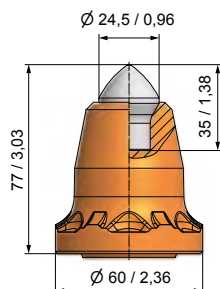
10



BK F38

BS38F-73.6077

10

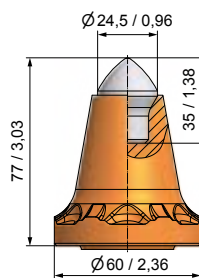


Vorzugsware

BK F36

BS38F-71.6077

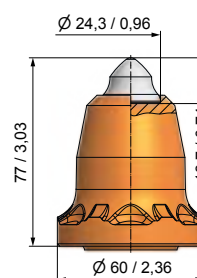
10



BK F36S

BS38F-71.6077A

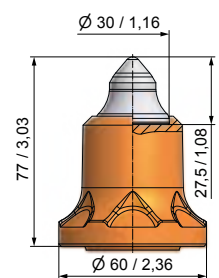
10



BK F34

BS38F-68.6077

10

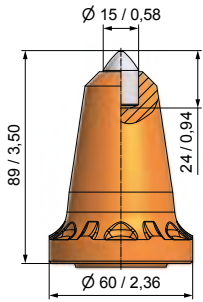


BK F37

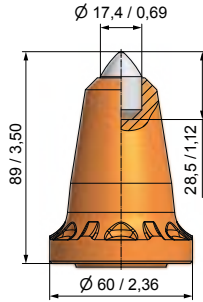
BS38F-69.6077

10

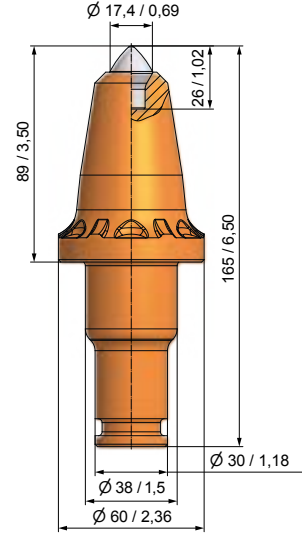
Schaftsystem Ø 38/30 mm - 1,5/1,18" Kopflänge 89 mm/3,5"



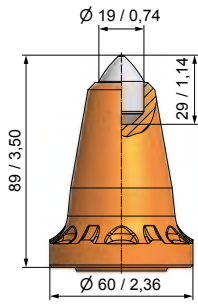
BKF41
BS38F-15.6089



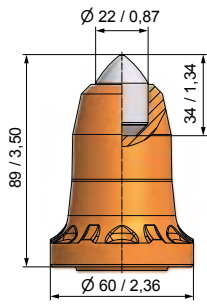
BKF42
BS38F-17.6089



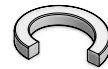
BKF45
BS38F-70.6089



BKF43
BS38F-19.6089



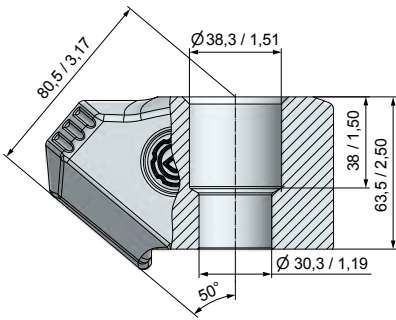
BKF44
BS38F-22.6089



Sicherungsring
SI35/22

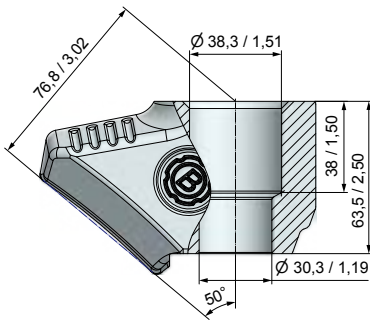


Schaftsystem Ø 38/30 mm - 1,5/1,18"



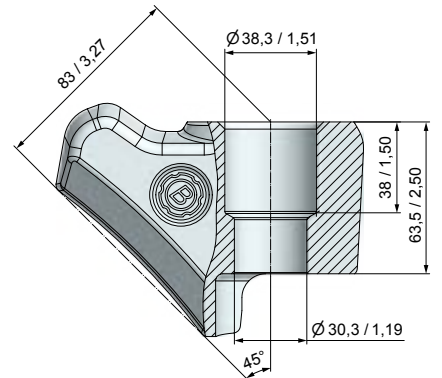
BHR187

B3830.8250



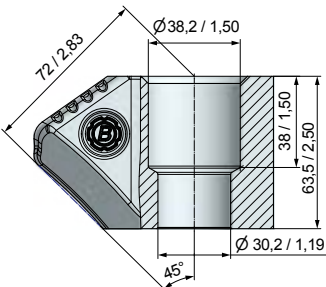
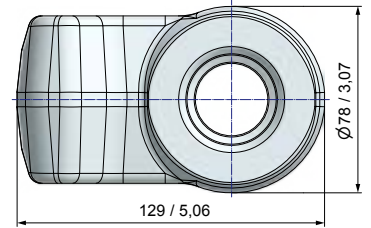
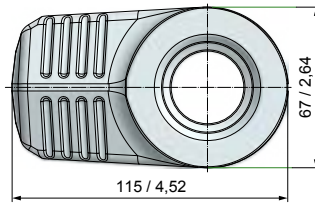
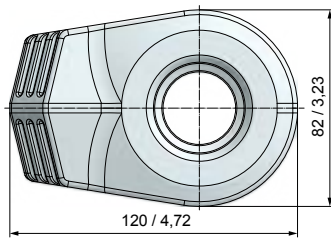
BHR188

B3830.6750



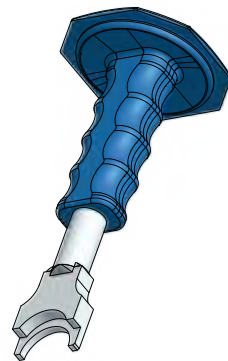
BHR204

B3830.7845



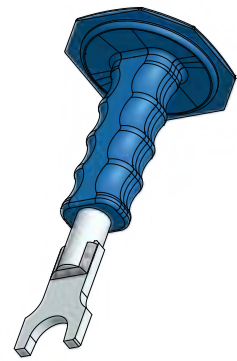
BHR38

B43H



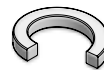
BZ35

Montagewerkzeug



BZ34

Demontagewerkzeug



SI35/22



SRZ02

Zange

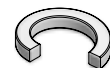


SR83



BZ39

Keilaustreiber



Sicherungsring

SI35/22

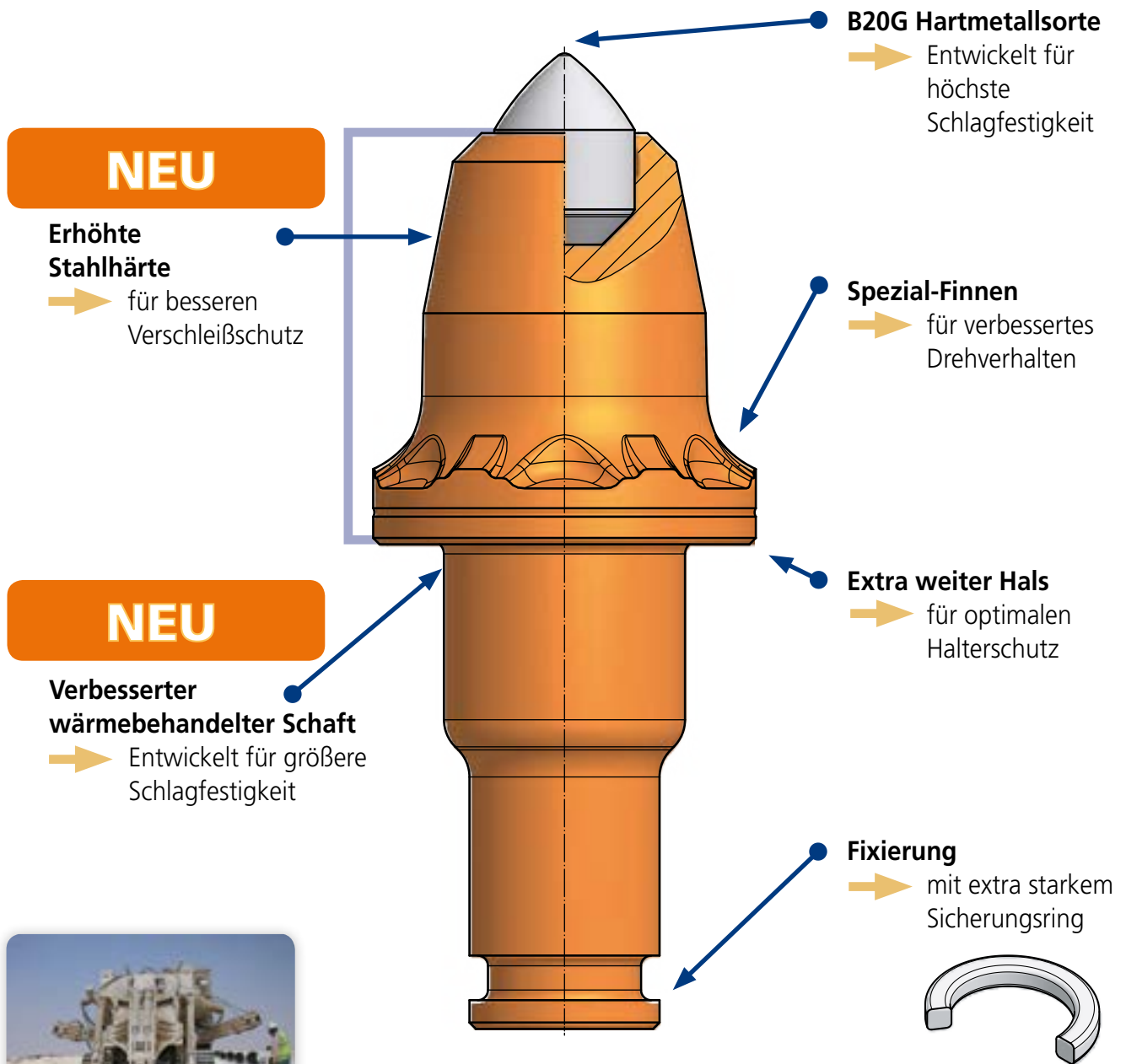


Sicherungsring

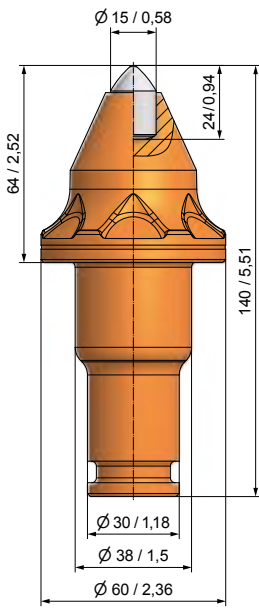
SR83



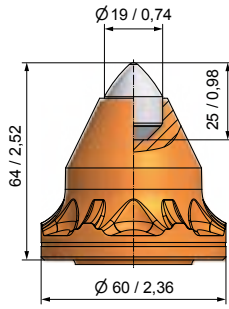
Grabenfräs-Werkzeuge Baureihe BKF HiPro (High Protection)



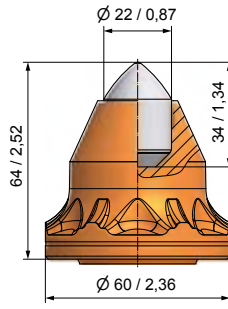
Schaftsystem Ø 38/30 mm - 1,5/1,18" Kopflänge 64 mm/2,5"



BKF24H 10
BS38F-15.6064H



BKF22H 10
BS38F-19.6064H



BKF26H 10
BS38F-22.6064H

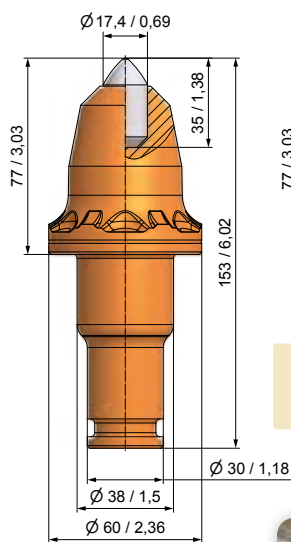


BZ35
Montagewerkzeug

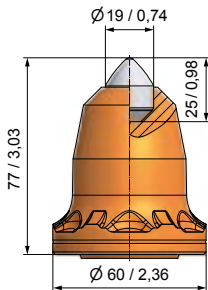


BZ34
Demontagewerkzeug

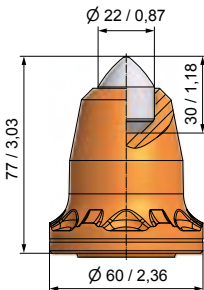
Schaftsystem Ø 38/30 mm - 1,5/1,18" Kopflänge 77 mm/3,0"



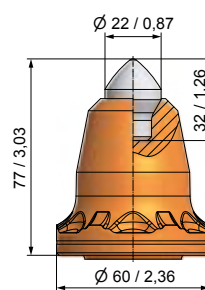
BKF49H 10
BS38F-17.6077AH



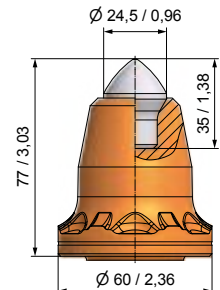
BKF30H 10
BS38F-19.6077H



BKF31H 10
BS38F-22.6077H



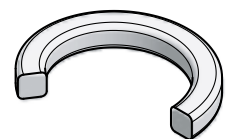
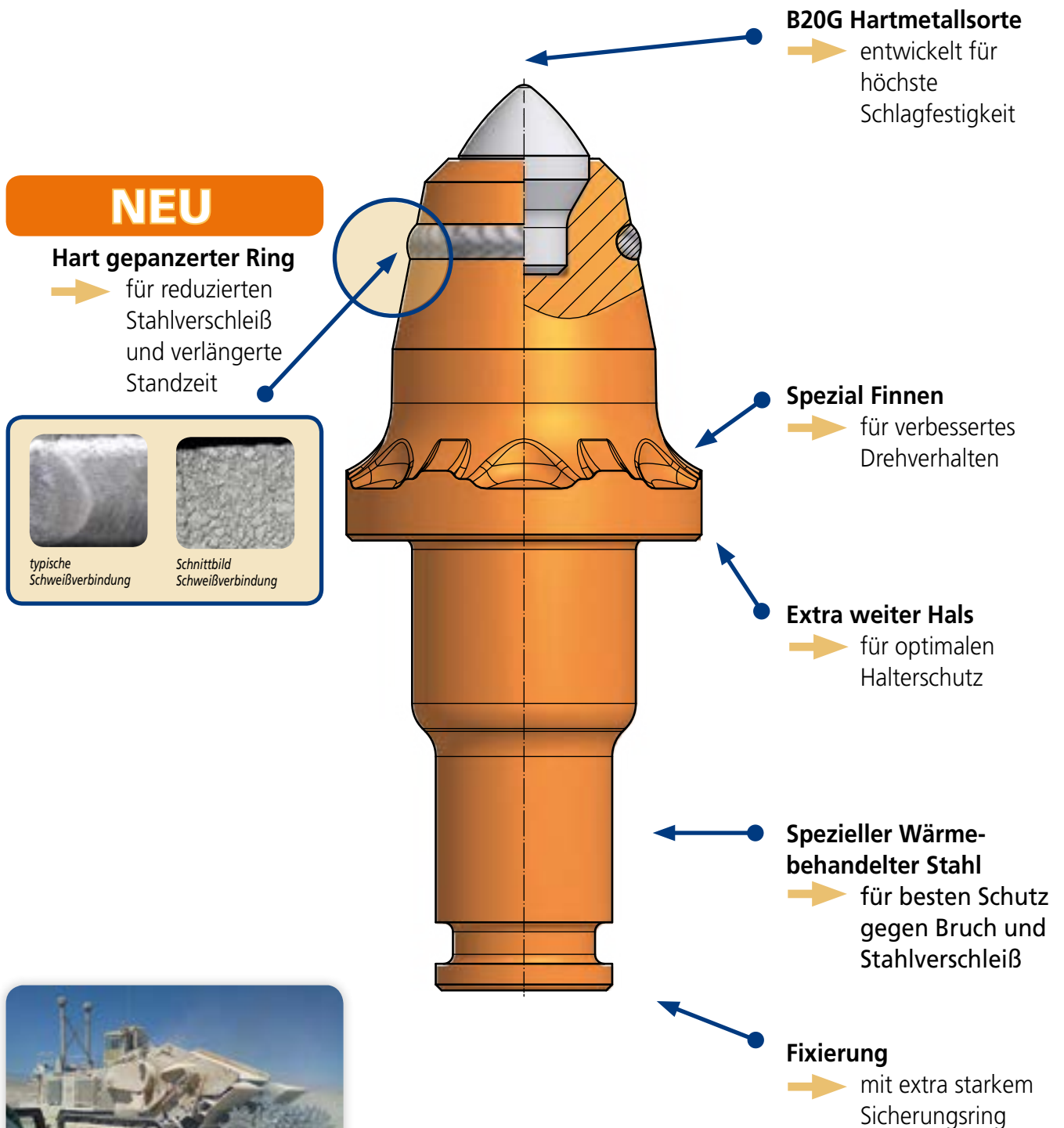
BKF38H 10
BS38F-73.6077H



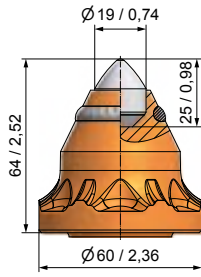
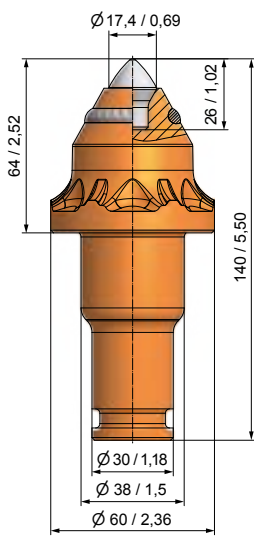
BKF36H 10
BS38F-71.6077H



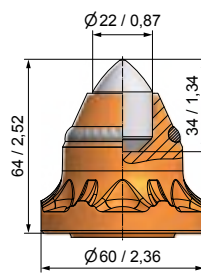
Grabenfräs-Werkzeuge Baureihe BKF DoPro (Double Protection)



Schaftsystem Ø 38/30 mm - 1,5/1,18" Kopflänge 64 mm/2,5"



BKF22P 10
BS38F-19.6064P



BKF26P 10
BS38F-22.6064P



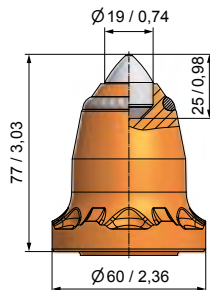
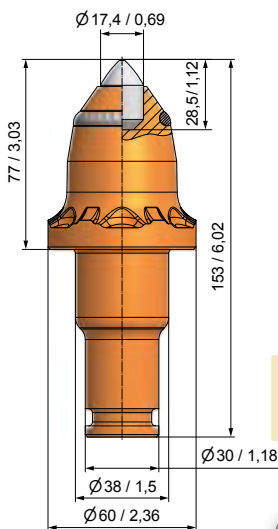
BZ35
Montagewerkzeug



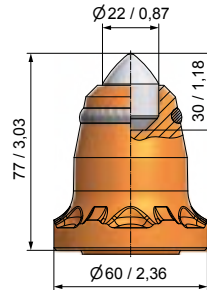
BZ34
Demontagewerkzeug

BKF25P 10
BS38F-70.6064P

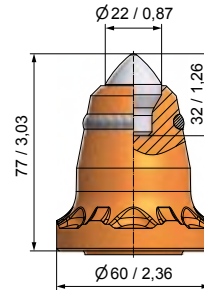
Schaftsystem Ø 38/30 mm - 1,5/1,18" Kopflänge 77 mm/3,0"



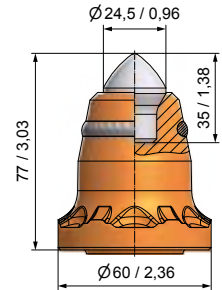
BKF30P 10
BS38F-19.6077P



BKF31P 10
BS38F-22.6077P



BKF38P 10
BS38F-73.6077P



BKF36P 10
BS38F-71.6077P

BKF33P 10
BS38F-17.6077P





D

BETEK GmbH & Co. KG

Sulgener Str. 21 - 23
D-78733 Aichhalden

Service-Nummer + 49 (0) 74 22 / 5 65-590
Service-Fax + 49 (0) 74 22 / 5 65-181

trenchtek@betek.de
www.betek.de

Vertriebspartner

